



SULLUBE® FLUSH CONVERSION

HELPS REMOVE VARNISH — THE LEADING CAUSE OF PREMATURE FAILURE
FOR ROTARY SCREW COMPRESSOR AIR ENDS

**“Without compressed air,
we would not be able to run”**

Nicole Kelso,
Operations Manager, Hawk Steel Inc. & Sullair Customer

SULLUBE CLEANS & PROTECTS ALL ROTARY SCREW AIR COMPRESSORS

Compressed air is vital to operations. Without it, many processes would not be able to run. That's why it's critical to clean and protect all components throughout the compressor.

Varnish is the byproduct of lubricant degradation — and the number one enemy of rotary screw compressors. Even a small amount of varnish left in the system can accelerate the varnishing process.

And, varnish impacts every component the fluid comes in contact with — air ends, coolers, oil lines, sumps and filters.

Not only are these components expensive to repair or replace, they can cause **unplanned downtime** and **reduced efficiency**.

A Sullube flush conversion will help remove varnish from your compressor quickly and easily.



A flush will help:

- Dissolve varnish
- Reduce energy demand
- Improve cooling
- Extend air end life
- Prevent future varnish and sludge buildup

See for yourself

Below shows a flush of a 1979 Sullair compressor previously using another lubricant. After only **35 minutes**, you can see the fluid has changed color significantly—showing the extensive buildup removed.



See it in action at <https://bit.ly/2LszZaV>

MAKE THE SWITCH TO

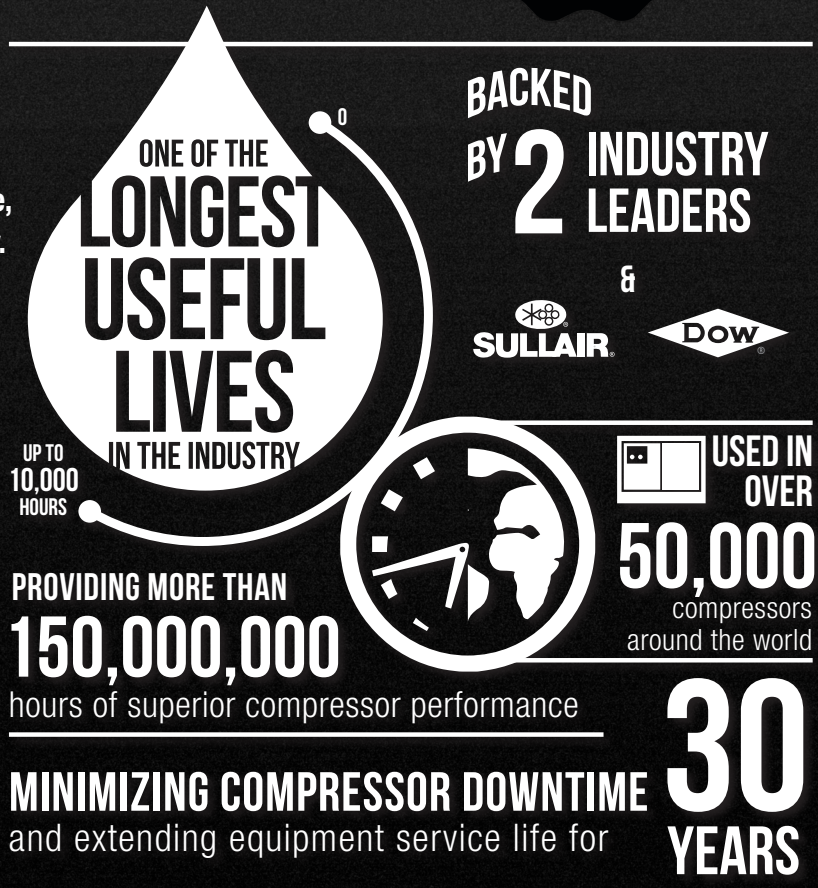
INVEST IN THE LIFEBLOOD OF YOUR COMPRESSOR



Lubricant is the lifeblood of your compressor. For a job this important, trust the best formula and additive package on the market.

Genuine Sullube is an extended-life, polyglycol base, synthetic fluid powered by Dow Chemical Company.

- One of the longest useful lives in the industry — up to 10,000 hours
- Protects and cleans
 - Resists sludge and varnish
 - Removes existing varnish
- High flash point
 - 505°F/263°C
- Good cooling ability for reliable and safe operation
- High thermal conductivity
 - Helps compressors run cooler in any climate
 - Stabilizes operating temperature
- Environmentally friendly
 - Biodegradable for easy disposal
- Low carryover—less than 1 ppm
- Less fluid needed for top-offs



UNDERSTANDING FLUID BASE STOCKS

Base stocks are the main ingredient in compressor fluid. Check out how **Polyglycol** — the base stock of **Sullube** — compares to the alternatives.

Base Stock	Varnish Potential	Heat Transfer	Carryover	Flash Point	System Compatibility	Biodegradable Condensate
Polyglycol (Sullube)	NO Varnish	Highest	Very Low <1 ppm	505°F / 263°C	Excellent	YES
Silicone (24KT)	NO Varnish	Very High	Low - Moderate	484°F / 251°C	Excellent	No
Synthetic Hydrocarbon PAO (PristineFG)	Will Varnish	Moderate	Moderate 3-4 ppm	450°F / 232°C	Good	No
Hydro Treated Hydrocarbon (SRF Fluids)	Will Varnish	Low - Moderate	Moderate 4-5 ppm	413°F / 212 °C	Good	No
Hydrocarbon	Will Easily Varnish	Low - Moderate	Moderate - High 6 ppm	360°F / 182 °C	Good	No
"Polyglycol Blend" / Diester	Forms SLUDGE	Moderate	Moderate 4-6 ppm	High	Potential Problems	No